

QUANTUM

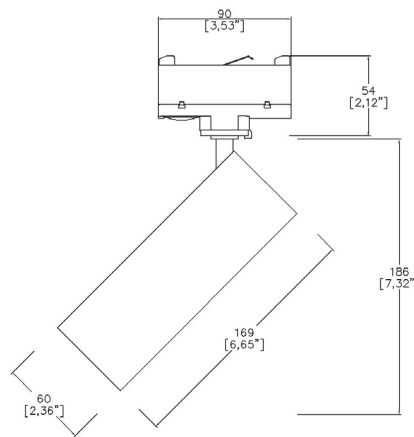
## TubeLED Mini Quantum HO



TM65.2 10kgCO2e

TM66 2.5 CEAM

60mm (2.36") overall diameter. TubeLED Spotlight for use on mains voltage track with integral driver. Family of matching products also available.



TL6030/Q-HO-3CT

LED Source	Q-HO	Q-HO	Q-HO	Q-HO	
CCT	3000K	3000K	3000K	3000K	
Drive Current^	350mA	350mA	350mA	350mA	
Power inc Driver	14W	14W	14W	14W	
Beam Angle	NF(17°)	MF(24°)	FL(31°)	WFL(48°)	
Delivered Lumens	1867	2003	1674	1652	
Delivered Intensisty cd	15041	12381	5733	2786	
Efficacy lm/w	133	143	119	120	
Forward Volt	34V	34V	34V	34V	
CRI	≥90 CRI	≥90 CRI	≥90 CRI	≥90 CRI	

Apply these factors to 3000K for lumen output of other CCTs: 2700K x 0.98 / 4000K x 1.02.

Project Ref: \_\_\_\_\_

Location Ref: \_\_\_\_\_

Fixture Order Code: **TL6030/Q-HO** -  -  -  -  -  -  - **3CT** - **0350**

**Fixture**

TL6030/Q-HO TubeLED Mini QUANTUM HO

**CCT**

27 2700K  
30 3000K  
40 4000K (I)  
(I) contact Lucent for availability

**Beam**

NF Narrow Flood  
MF Medium Flood  
FL Flood  
WFL Wide Flood

**Protocol**

S Non-Dim (Integral)  
P Phase (Integral)  
A Analogue (0-10v) (Integral)  
D DALI (Integral)

**Colour Insert**

(Blank) Standard Black RAL 9005 to be supplied  
SNK1 Satin Nickel  
SGD1 Satin Gold  
PCP1 Polished Copper  
PGD1 Polished Gold

**Finish**

WH03 White RAL 9016  
BK01 Black RAL 9005  
RAL\* Custom RAL Colour\*  
ABR1 Antique Brass  
ABZ1 Antique Bronze

**Fixing**

3CT Mains Voltage Track

**Drive Current**

0350 350mA

Finish selection

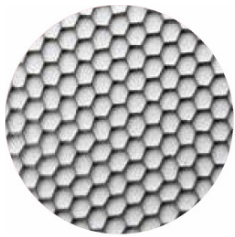


Antique Brass



Antique Bronze

Accessories



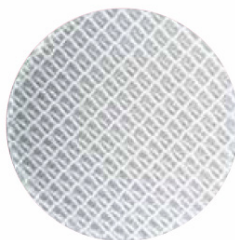
Honeycomb Louvre



Diffusing Lens



Frosted Lens



Heavy Spread Lens



Linear Spread Lens

Accessories Order Code:

Louvre/Lens (2)

- LL45 Honeycomb Louvre
- LLDF Diffusing Lens
- LLFR Frosted Lens
- LLLS Linear Spread Lens
- LLHS Heavy Spread Lens

(2) Max 2 accessories can be used

## Technical Details

\*Custom RAL code must be specified. Custom RAL colours can increase prices and lead times

Dimming. Whilst Lucent can offer the majority of its luminaires with various dimming options, it remains the responsibility of the specifier/installer to check and ensure compatibility of any control equipment used. Additional cabling may be required depending on the dimming protocol specified.

^ Depth indicated is the minimum recess depth for the luminaire with a remote mounted LED driver. Installing a driver through either the luminaire cut-out or installation kit may require additional recess depth, please refer to the relevant luminaire installation instructions for further details. Data correct at time of publishing

First Fix Requirement. Luminaire comprised of fixture body with ceiling trim and installation kit, which is to be fitted into the ceiling once finished. Ensure correct alignment of the installation kit before final assembly (see luminaire installation instructions for details)

IP Rating. Tested from underside of the ceiling

Note that the picture of the finishes provided is for illustrative purposes only. The finishes may vary in colour, texture and appearance. Contact Lucent lighting Ltd for more information.

It is the policy of Lucent Lighting to continually review and improve its products and therefore reserve the right to change any details of product or withdraw specifications without prior notice.

Luminaires designed to comply with EN60598 and all other standards.

This specification sheet supersedes all previous versions.

All intellectual property rights pertaining to the product described above and to this document are owned by or licensed to Lucent Lighting Ltd.

We reserve the right to take whatever action is necessary to protect those intellectual property rights.

Please notify Lucent Lighting Ltd of any inaccuracies immediately. E&OE